

merten

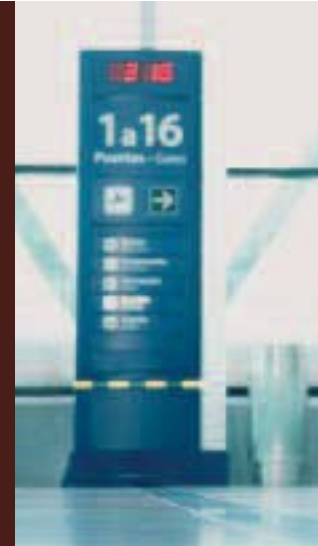
MERTEN@HOME

THE INNOVATIVE USER INTERFACE FOR BUILDING CONTROL



MERTEN@HOME

THE CONTROL PARADISE



Wouldn't it be great if you could set your underfloor heating to a cosy temperature via PDA from the airport's W-LAN hotspot at the end of a business trip?

Or you could view your monitoring system, messages and camera images from home in an Internet café while on holiday, just to make sure there are no problems?

Or during a cosy evening in front of the TV, you could see directly on the screen who has just rung the doorbell and open the front door from your armchair?

Or you could activate your presence simulation via a touchscreen when you leave the house to go on holiday?

Nothing could be simpler – and these are just some of the many options offered by merten@home. The new user interface enables users to conveniently control all building functions for private homes, holiday cottages or commercial properties. Whether it be heating, lighting, blinds, your surveillance system or your domestic appliances.

Whether locally or remotely. With merten@home, you are always at home, wherever you are.

**ALWAYS
AT HOME,
WHEREVER
YOU ARE**



CONTROL OPTIONS

A HOUSE IN POCKET FORMAT

Nowadays, owners and users of buildings have one thing in common above all else: their desire for safety, comfort, flexibility and efficiency.

Merten@home offers the ideal solution to meet these needs – in a more convenient and flexible way than ever before. It does not matter which input medium you wish to use to control building functions: whether you opt for a PDA, a PC, a touchscreen or a television, the intuitive user interface is always structured in the same way.

After securely logging in with your personal password, first select the building you wish to access, such as your own home, your apartment, your practice in town or your holiday cottage in the mountains.

To regulate the building functions you require, such as heating or lighting, you can then choose from four convenient control options:

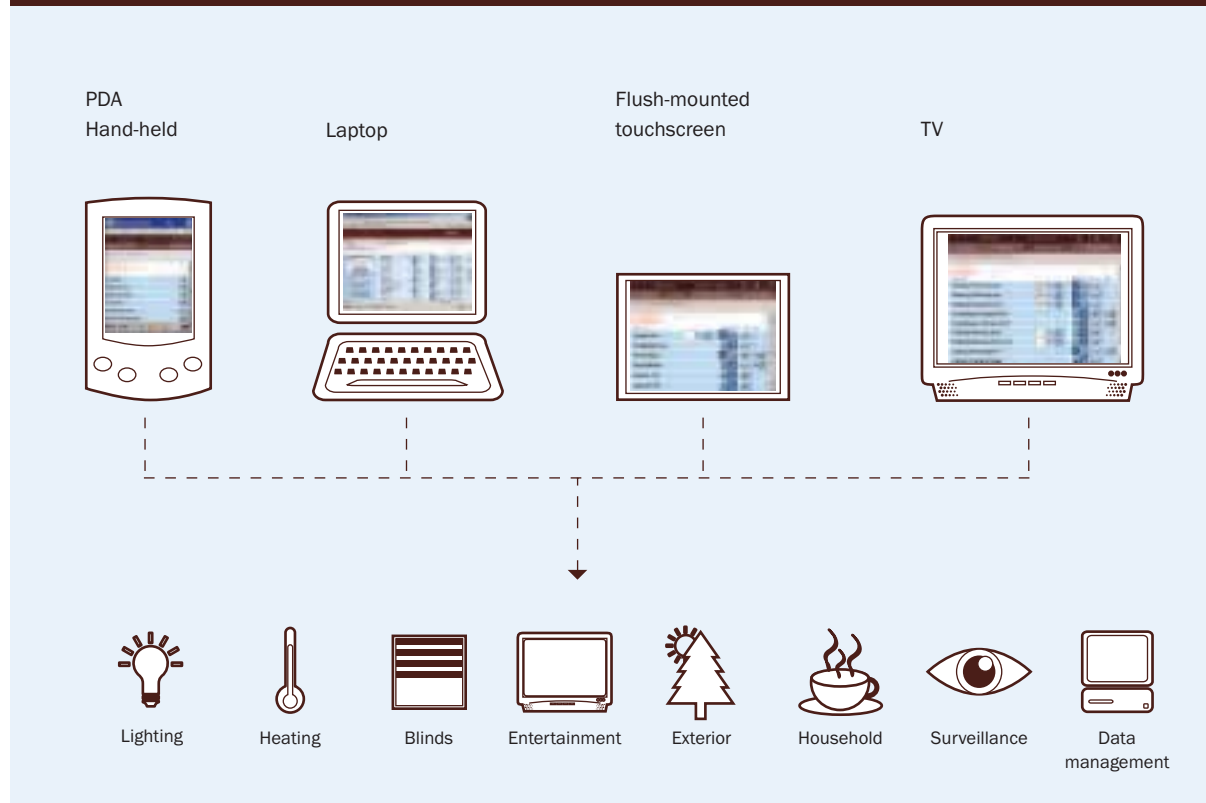
- floors
- rooms
- functions
- programs

However you decide to view or control individual functions, it only takes a few clicks with merten@home.

Do you want to find out more?

The following pages contain sample applications for merten@home. Alternatively, you can experience the innovative user interface interactively online at www.merten.com.

MERTEN@HOME: CONTROL A WIDE RANGE OF BUILDING FUNCTIONS USING A UNIFORM USER INTERFACE





Control via floors:

For example, 2nd floor: Simply switch off all the lights on the 2nd floor centrally.



Control via rooms:

For example, the living room: Raise or lower your blinds in the living room, either all together or individually.



Control via functions:

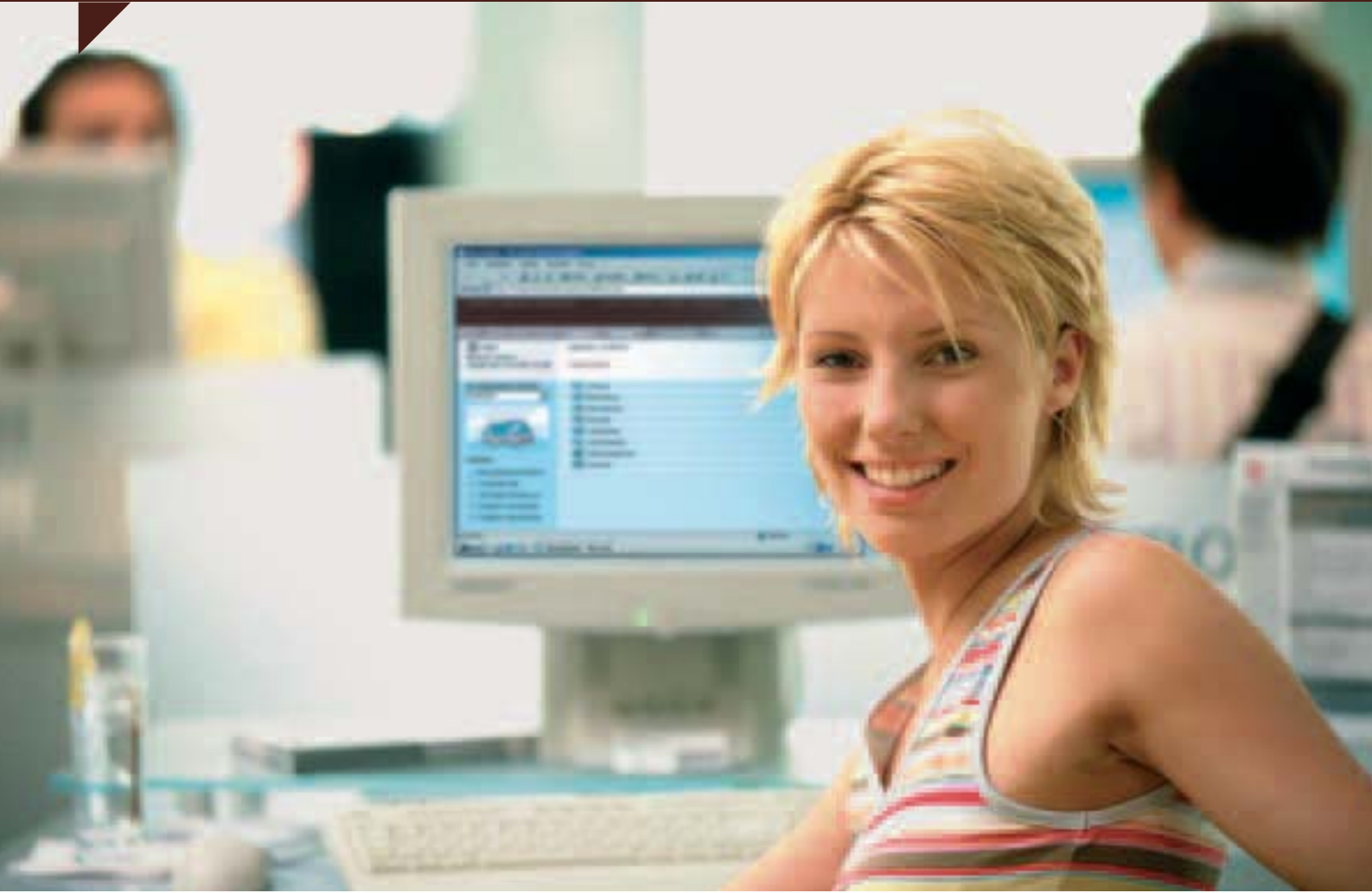
For example, data management: Get an overview of your current consumption data for electricity, water etc.



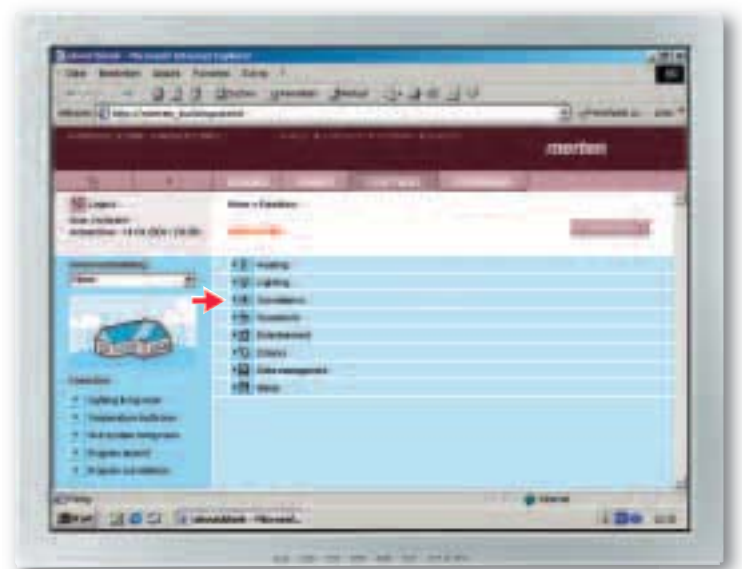
Control via programs:

For example, safety: Activate your individual safety program, consisting of a movement detector, surveillance camera and presence simulation.

EXAMPLE 1: MONITORING FROM AN INTERNET CAFÉ MAKING SURE YOU CAN RELAX ON HOLIDAY

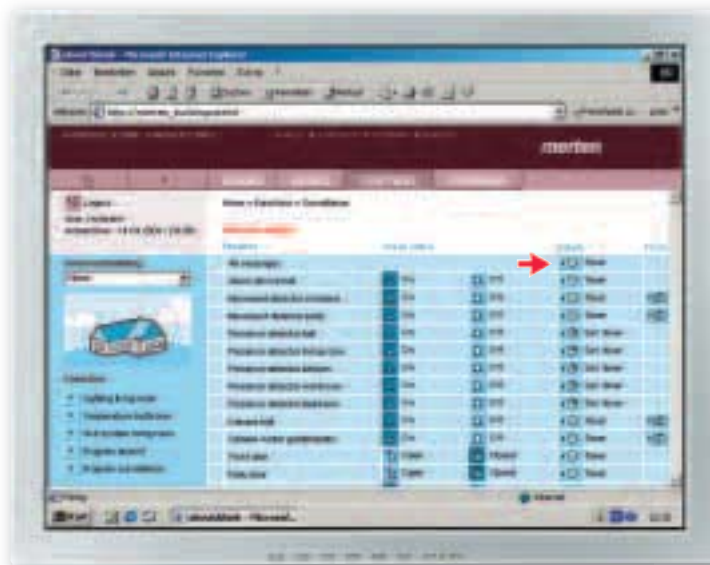


You are away on your well-earned holiday and have agreed with a neighbour that she will water your plants while you are away. To be on the safe side, you go to an Internet café and log onto your personal merten@home address at home. Now you can view all the monitoring functions, just to make sure that everything is in order. Have a great holiday!



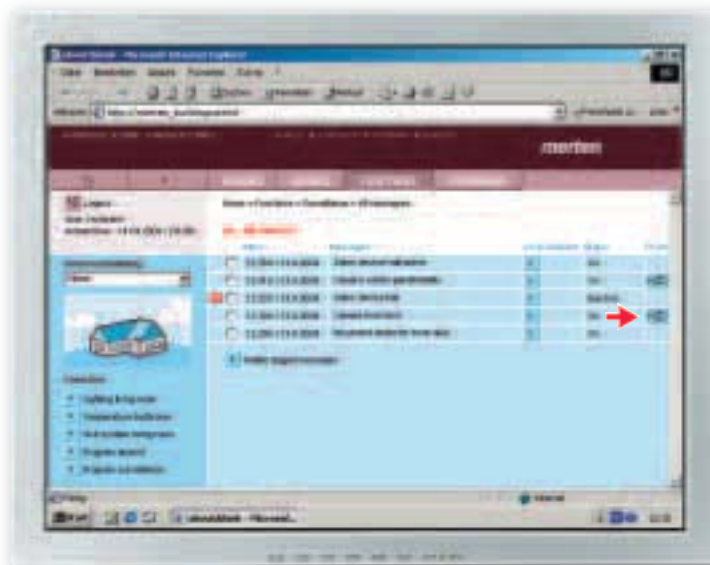
Step 1:

After you have logged on at home, select the “Surveillance system” item in the “Functions” menu.



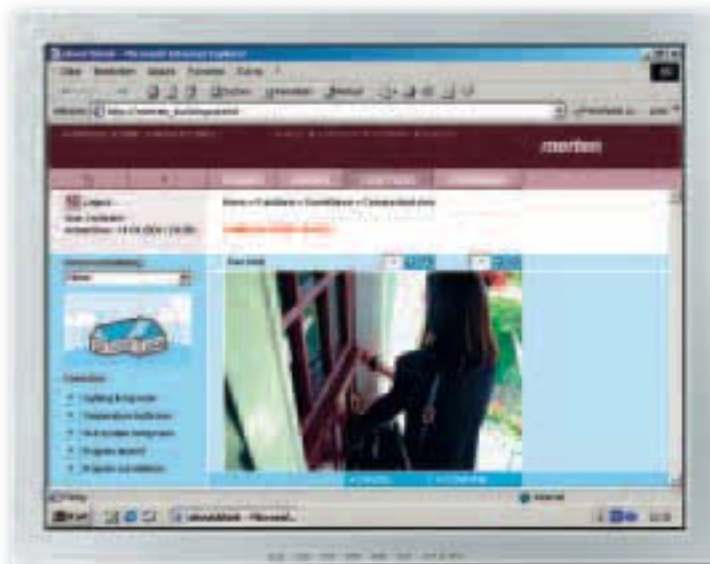
Step 2:

On the “Surveillance system” summary page, you will not just see all the current surveillance settings. From here, you can also click on “All messages” to view all the registered activities.



Step 3:

The list of messages received shows that the movement detector and the cameras have been activated near the entrance door and in the conservatory/patio area. The alarm system has also been deactivated and switched back on after a brief period of time. You can therefore conclude that your neighbours watered your plants between 12.29 and 12.56.



Step 4:

After clicking on the “Front door” camera image, you can see that your neighbour really has paid a visit. You can now relax and log out.

EXAMPLE 2: CONTROLLING THE HEATING VIA YOUR PDA YOUR HOUSE IN POCKET FORMAT

Let us assume you are waiting in the airport lounge for your flight home at the end of a business trip abroad. To avoid having to come home to a cold and unwelcoming house after a stressful week, you go online with your PDA via the W-LAN hotspot and call up your personal merten@home address in Internet Explorer.

When you have successfully logged on, select the living room from the "Rooms" menu to turn up your underfloor heating a few hours before you get back. Welcome home!



Step 1:
Dial through to your home via the W-LAN hotspot using secure SSL-coded access.



Step 2:
In the "Rooms" menu, select "Living room".



Step 3:

You can view the current settings for your living room at a glance. The heating still shows a room temperature of 16 degrees, which you set before your departure. You can now increase the temperature to 22 degrees.



Step 4:

Enter the time from which the temperature should be changed. To do this, select the required day of the week and enter the start time. You can now log out.

EXAMPLE 3: CONTROLLING BUILDING FUNCTIONS VIA YOUR TELEVISION NON-STOP ENJOYMENT

The Champions League final is due to start at any minute. To experience this gripping football event in the right atmosphere, use the remote control to dim the lights in your living room from where you are sitting. Now nobody can interrupt your enjoyment.

However, if someone should ring at the doorbell, you can also display your front door surveillance camera on your television screen, and simply open the door using your remote control.

Fair play!



Step 1:

Using your remote control, you switch from the football match to merten@home and select the "Comfort" item in the "Programs" menu.



Step 2:

To create the right lighting atmosphere to match the gripping football match, activate the "Television" lighting scenario.



Step 3:

Just when a risky free kick is about to be taken, the doorbell rings. To avoid missing the excitement, go to `merten@home`, select the "Surveillance system" item in the "Functions" menu and click on the "Front door" camera.



Step 4:

Now you can see who has turned up: two fellow football fans. To let them in, simply click on "Front door" under "Favourites"

EXAMPLE 4: ACTIVATING PRESENCE SIMULATION VIA YOUR TOUCHSCREEN AWAY BUT STILL AT HOME



Do you want to make sure that you closed all the windows and doors when you left the house – without having to check through the whole house again? Do you want to make sure that there is no evidence of your absence?

With merten@home you can always double check that everything is in order. Before leaving home, you can check that all the windows and doors are closed via your touchscreen in the hall. Not only that: you can also conveniently activate the presence simulation.

Have a pleasant day!



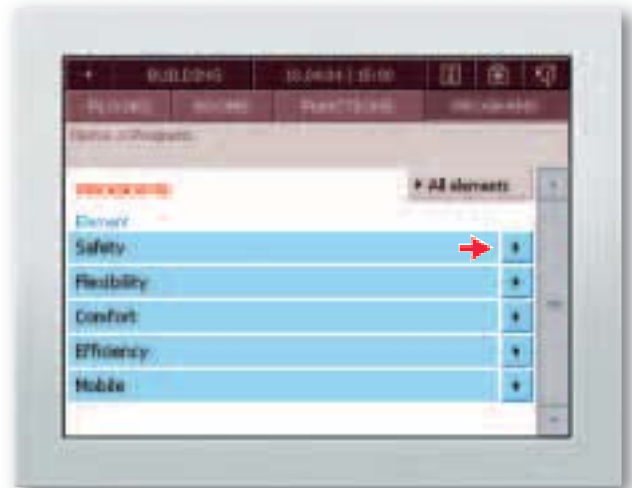
Step 1:

Select the "All elements" item in the "Functions" menu.



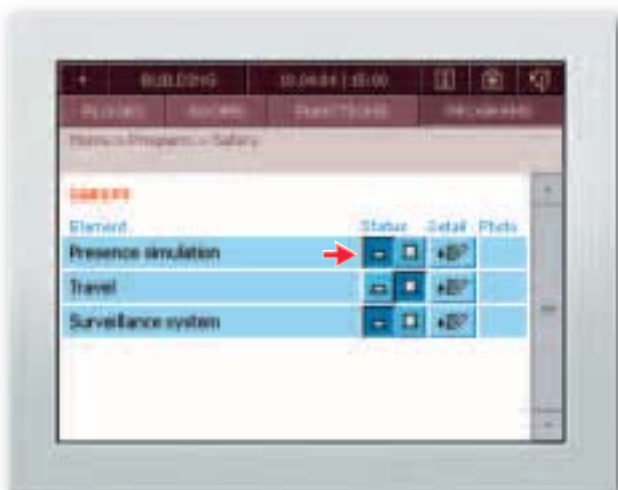
Step 2:

You can see that the dormer window in the bedroom is still open, and decide to close it.



Step 3:

To activate the presence simulation before leaving the house, go to the "Safety" item in the "Programs" menu.



Step 4:

When you click on "Presence simulation", the lighting and music is switched on and off at pre-specified times, and the blinds are moved up and down.



Step 5:

Now all you have to do is log off and enjoy your day out.

TECHNICAL REQUIREMENTS
EVERYTHING YOU NEED FOR MERTEN@HOME





In order to use merten@home, you must have an IC 1 EIB Internet Controller installed. High quality at a reasonable price: The user-friendly interface is already integrated in the turnkey cabinet device, so you will not be faced with additional software costs.

To use merten@home while you are away from home, simply log on to the Domoport Internet service via Internet Explorer or Netscape Navigator, entering your address code. This guarantees SSL-coded access to your

IC 1, making it just as secure as home banking. This enables you to control all the building functions – convenient, simple and mobile.

With merten@home you can live and work more safely, flexibly and efficiently, and with a higher level of comfort and convenience.

Visit www.merten.com for an online demonstration and further information. You are welcome to contact the Merten sales team for personal advice and assistance.



The centrepiece of merten@home:
the IC 1 EIB Internet Controller.

Further technical requirements:

- PDA based on Microsoft Windows Mobile 2003 Software for Pocket PC
- Internet Explorer from version 5.0 or Netscape Navigator from version 6.0

SOLUTIONS FOR INTELLIGENT BUILDINGS

merten

Merten GmbH & Co. KG

P.O. Box 100653

D-51606 Gummersbach, Germany

Phone +49 2261 702-203

Fax +49 2261 702-328

export@merten.de

www.merten.com

